



CLASS **14X**

Door System Upgrade

Northern Rail, Arriva Trains Wales.

Ongoing



OVERVIEW

Train Door Solutions (TDS) has designed, installed and supplied key parts for upgrading Class 143 and 144 passenger door systems. This upgrade is also available for Class 142.

The Class 144 project was sponsored by Porterbrook Leasing and the Class 142 was sponsored by Angel Trains.

In addition TDS overhauled the lock mechanisms with a new lock actuator, lock switch and lock lever. The new system is designed as a direct replacement for the existing system. All new components have service proven history and are manufactured on behalf of TDS by the industries top suppliers.

The parts from TDS have improved the reliability and performance of the door system. Functionality and safety of the system has been maintained. Interfleet Technology has independently reviewed the door system upgrade against mandatory requirements and have granted engineering acceptance.

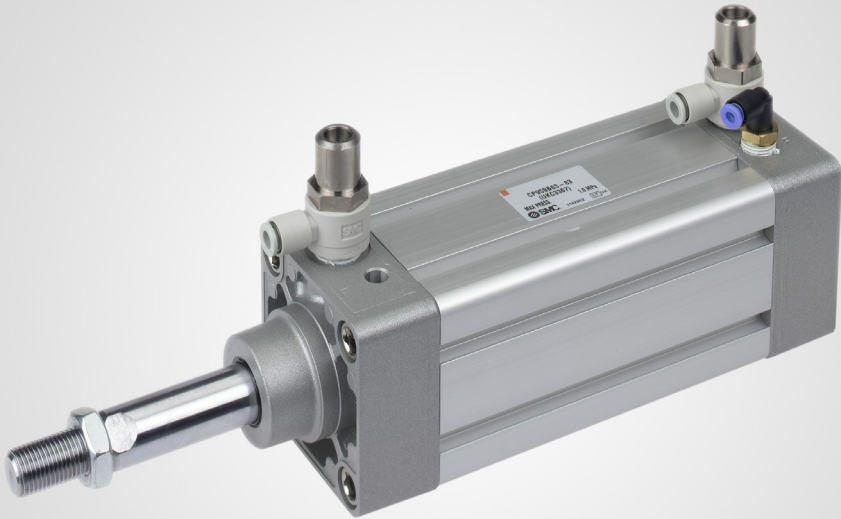
Train Door Solutions TDS have recently been awarded contracts to overhaul the door mechanism with new bearings, guide rollers and door seals as well as fitting of new door control equipment.

The parts are provided with a full 12 month warranty.

COMPONENTS

- DOOR ACTUATOR
- DOOR CONTROL PLATE
- AIR SUPPLY FILTER/REGULATOR MODULE
- ALL NECESSARY FITTINGS AND TUBING





CLASS 14X

Door System Upgrade

Northern Rail, Arriva Trains Wales.

Ongoing

TECHNICAL SPECIFICATION

DOOR CONTROL PLATE: Steel mounting supporting the following control components: Four station manifold block containing the door control valve, staff valve, emergency dump valve, close obstacle detection valve and pressure switches, regulator for reduced force during opening and soft-start valve.

ACTUATORS: 63mm double acting piston rod cylinder with adjustable end stroke cushioning and speed control.

FILTER/REGULATOR: Air supply filter and regulator with locking adjuster knob on regulator. Filtration rating 5µm.

LOCK MECHANISM: 25mm x 25mm single acting piston rod actuator, roller operated micro-switch and plated steel lock lever.

FITTINGS & TUBE: All pneumatic connections are push-in quick release type. All tubing is nylon in accordance with BS5409.

CONTROL	ELECTRO-PNEUMATIC
INPUT VOLTAGE	24 VDC
VOLTAGE RANGE	+/- 30% OF INPUT VOLTAGE
TEMPERATURE RANGE	-10°C TO +65°C
OPERATING PRESSURE	3 BAR

