

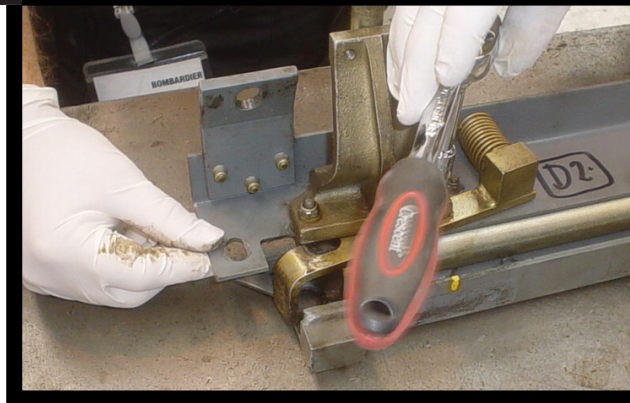


CLASS **455**

Door Control Upgrade

Southern Railways.

Completed: 2008



**OVERVIEW**

Train Door Solutions (TDS) has supplied key components for upgrading the Southern Class 455 fleet which runs on some of the busiest lines in and out of the capital.

The Class 455 project was awarded to TDS by Bombardier Transportation and the trains are owned by HSBC. The work was undertaken at Bombardier's Ashford facility.

The project consisted of the overhaul of 46 Class 455 units with TDS supplying door system components for over 920 doorways.

All new components have service proven history and are supplied by the leading manufacturers to the rail industry. The functionality and safety of the system have been maintained and is paramount to TDS.

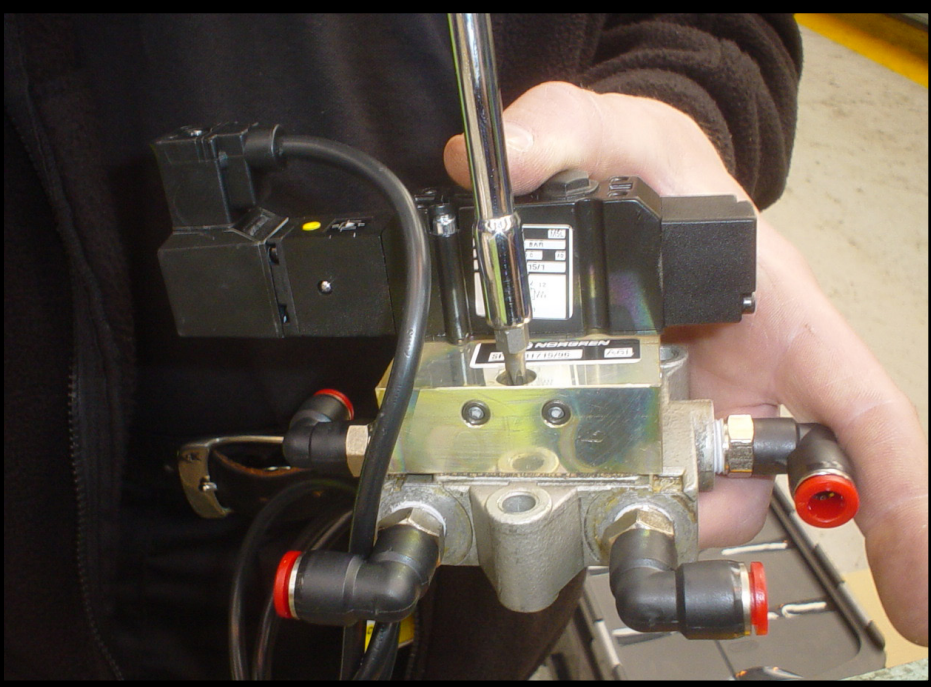
In addition to supplying all necessary components for the project, TDS undertook the training of Bombardier's fitters to enable them to competently overhaul the door system to an enhanced C6 specification. This also included the provision of a comprehensive training manual to complement the on-site training package.

The parts are provided with a full 12-month warranty.

**COMPONENTS**

- OVERHAULED DOOR ACTUATOR
- NEW EP VALVE MODULE
- SPEED CONTROLLERS
- PASSENGER AND CREW DOORS REGULATOR MODULE
- TRACTION INTERLOCK SWITCHES
- MALE AND FEMALE PASSENGER DOOR RUBBERS
- CREW DOOR RUBBERS
- WEATHER SEALS
- DOOR ROLLERS AND SHOULDERED BOLT ASSEMBLIES





**CLASS 455**

**Door Control Upgrade**

Southern Railways.

Completed: 2008

**TECHNICAL SPECIFICATION**

**VALVE MODULE:** 5 port 2 position single solenoid pilot operated valve. Long life rubber seal technology.

**ACTUATOR:** The original 40mm actuators were overhauled by Train Door Solutions (TDS) to WOS643.

**REGULATOR:** Reliving type regulator with in built check valve for both passenger and crew door.

**TRACTION SWITCH:** Snap action roller switch with self wiping contacts that greatly improves the life of the switch and reduces maintenance times.

**FITTINGS & TUBE:** All pneumatic connections are push-in quick release type. All tubing is nylon in accordance with BS5409.

CONTROL	ELECTRO-PNEUMATIC
INPUT VOLTAGE	96 VDC
VOLTAGE RANGE	+/- 30% OF INPUT VOLTAGE
TEMPERATURE RANGE	-10°C TO +65°C
OPERATING PRESSURE	3.5 BAR

